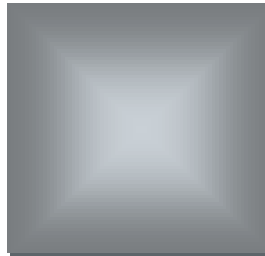


# 2018 IOWA INDUSTRY PROFILE

## AGRICULTURE, FORESTRY, FISHING & HUNTING IOWA WORKFORCE DEVELOPMENT



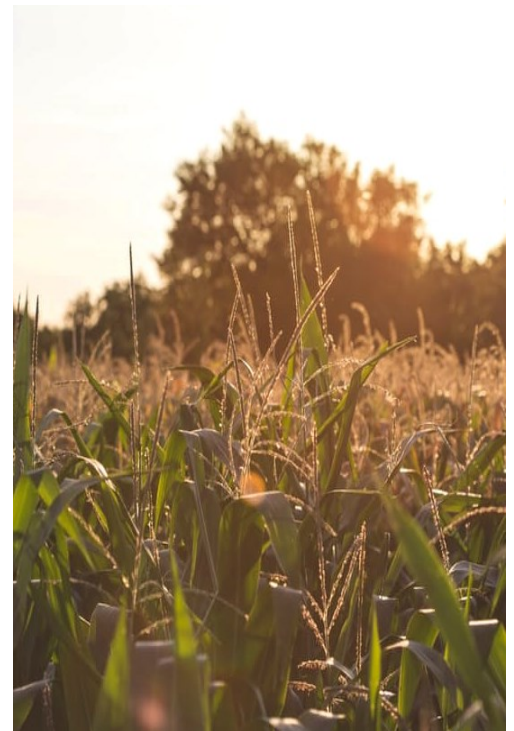
### Executive Summary

In 2017, the **Agriculture, Forestry, Fishing and Hunting** sector comprised 1.3 percent of all covered public and private employment in Iowa. This sector reported an average annual wage of \$39,459 for 2017, which was 14.4 percent lower than the statewide average of \$46,073 for all industries.

This sector increased employment by 30.5 percent between 2008 and 2017, adding 4,714 jobs in that time. Employment in this sector grew every year in the last decade. This includes a yearly employment gain of 426 from 2017.

**Animal production**, the largest subsector within this industry, employed 11,410 workers, or 56.5 percent of all sector employment. **Crop production** employed 5,124 workers in 2017. **Forestry and logging** and **Fishing, hunting, and trapping** combined account for less than one percent of total sector employment.

The employment in the Agriculture, Forestry, Fishing and Hunting sector does not include self-employed farmers and operations that have less than 10 workers or that have a payroll of less than \$20,000 per quarter.





# AGRICULTURE, FORESTRY, FISHING, AND HUNTING IOWA INDUSTRY PROFILE

## What is Agriculture, Forestry, Fishing, and Hunting?

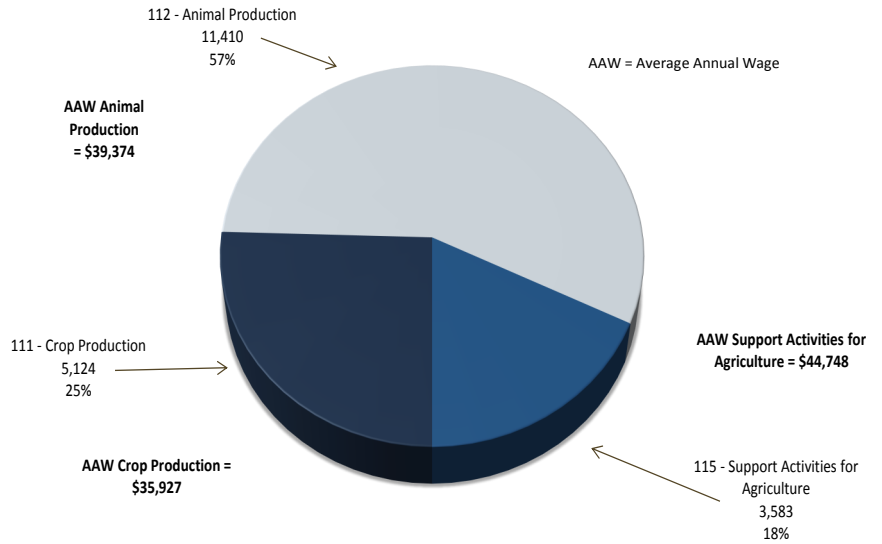
This sector comprises establishments primarily engaged in growing crops, raising animals, harvesting timber, and harvesting fish and other animals from a farm, ranch, or their natural habitats.

The sector distinguishes two basic activities: agricultural production and agricultural support activities. Agricultural production includes establishments performing the complete farm or ranch operation, such as farm owner-operators, tenant farm operators, and sharecroppers. Agricultural support activities include establishments that perform one or more activities associated with farm operation, such as soil preparation, planting, harvesting, and management, on a contract or fee basis.

Source: [www.bls.gov/cew/bls\\_naics/bls\\_naics\\_app.htm](http://www.bls.gov/cew/bls_naics/bls_naics_app.htm)

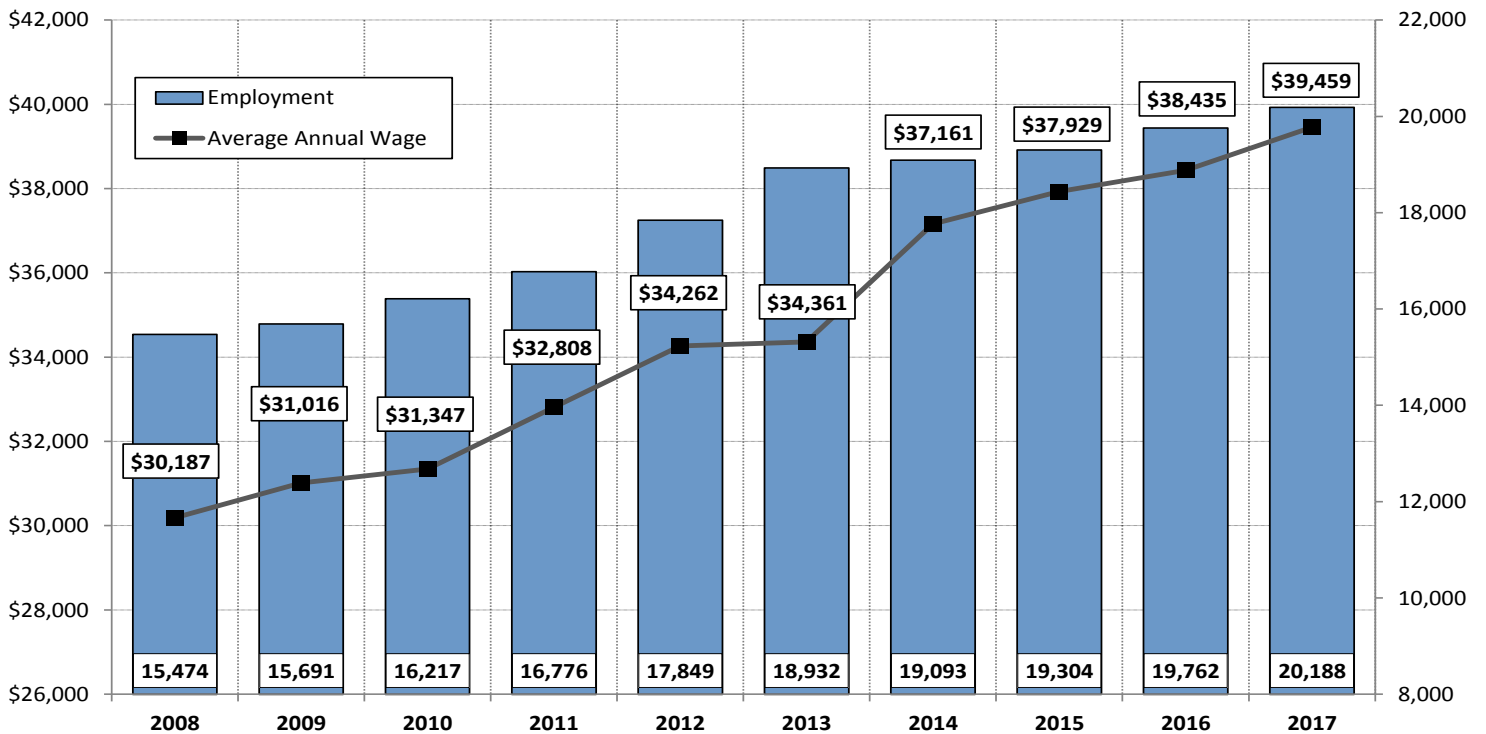
## 2017 Industry Breakout by Employment in Iowa

Agriculture, Forestry, Fishing & Hunting NAICS Industry Coding  
Percentage Employed and Average Annual Wage by Subsector



Source: Quarterly Census of Employment and Wages (QCEW), Iowa Workforce Development

## 2008-2017 Employment in Agriculture, Forestry, Fishing & Hunting in Iowa



Source: Quarterly Census of Employment and Wages (QCEW), Iowa Workforce Development

# AGRICULTURE, FORESTRY, FISHING, AND HUNTING IOWA INDUSTRY PROFILE



## Examples of Major Agriculture, Forestry, Fishing, & Hunting Employers

Name of Company	Industry
Centrum Valley Farms	Poultry and Egg Production
Hy-Line International	Poultry and Egg Production
Red Oak Greenhouses	Greenhouse, Nursey, and Floriculture Production
Center Grove Orchard	Fruit and Tree Nut Farming
Rose Acre Farms	Poultry and Egg Production

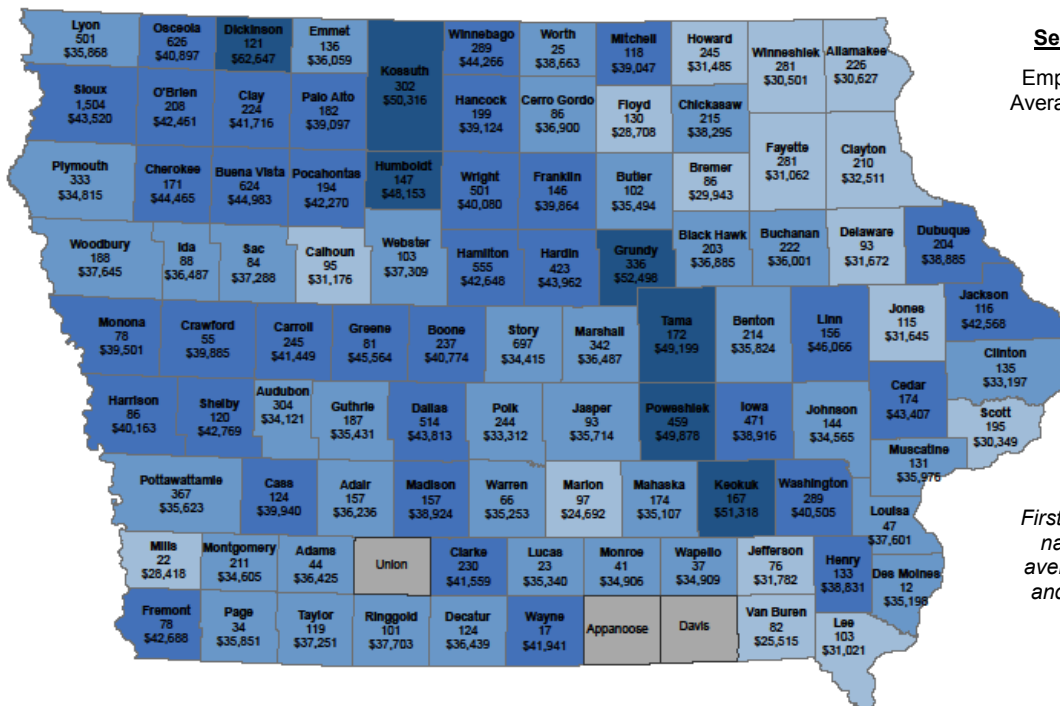
Source: [www.iowaworkforcedevelopment.gov/employer-database](http://www.iowaworkforcedevelopment.gov/employer-database)

## Employers

In 2017, there were 2,571 **Agriculture, Forestry, Fishing, and Hunting** locations across Iowa. **Animal production** has the most establishments in Iowa with 1,036 followed closely by **Crop production** with 1,034 locations across the state. **Support activities for agriculture and forestry** is third with 478 establishments.

The employers listed to the left are classified in the subsector that reflects their primary industry, although each company may be engaged in other economic activities.

## 2017 Covered Employment in Agriculture, Forestry, Fishing, & Hunting by County



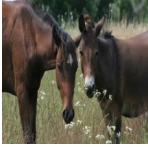
### Sector Statewide:

Employment - 20,188  
Average Annual Wage - \$39,459

**Label Key:**  
First line is the county name followed by average employment and finally, average wage.



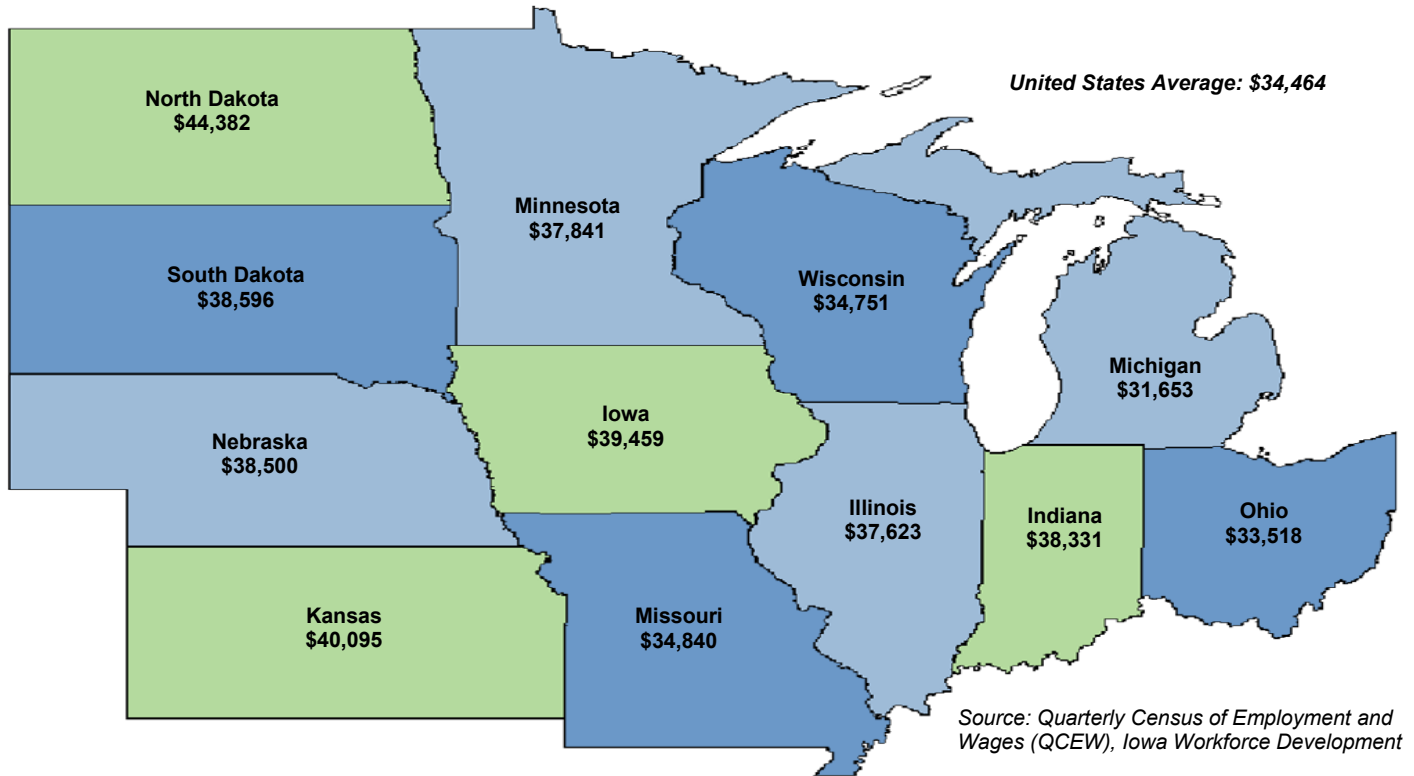
Source: Quarterly Census of Employment and Wages (QCEW), Iowa Workforce Development



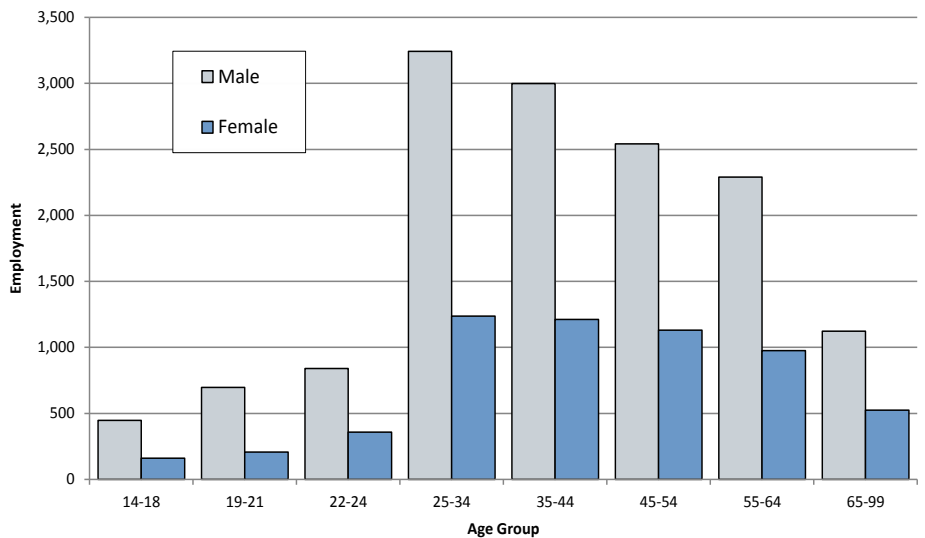
# AGRICULTURE, FORESTRY, FISHING & HUNTING IOWA INDUSTRY PROFILE

## 2017 Average Annual Wage for Covered Employment in Agriculture, Forestry, Fishing, & Hunting

State Comparisons by Private Ownership



## Industry Distribution by Age and Gender, 2nd Quarter 2017



Source: Local Employment Dynamics, Iowa Workforce Development and U.S. Census Bureau  
<https://lehd.ces.census.gov/>

### Contact Information

#### Iowa Workforce Development, Employment Statistics Bureau

1000 E Grand Ave  
Des Moines, IA 50319  
800-532-1249  
Fax: 515-281-8195  
lwd.lmi@iwd.iowa.gov  
www.iowaworkforcedevelopment.gov

Equal opportunity employer/program.  
Auxiliary aids and services are available  
upon request to individuals with disabilities.

TTY 515-281-4748  
1-800-831-1399

