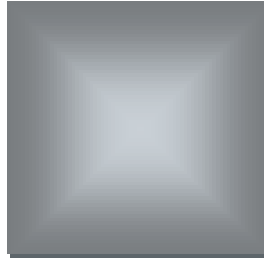


# 2018 IOWA INDUSTRY PROFILE

## ARTS, ENTERTAINMENT & RECREATION

### IOWA WORKFORCE DEVELOPMENT



#### Executive Summary

In 2017, the **Arts, Entertainment and Recreation** sector provided 21,175 jobs to Iowans, which represents 1.4 percent of all covered employment (both private and public sector) in the state. This sector reported an average annual wage of \$18,274, which is 39.7 percent of the average wage across all industries in the state, \$46,073.

Since 2008, employment in this sector declined to its lowest point in 2013 with employment of 19,214, but has since started to slowly increase to its current level in 2017. Despite a decrease from 2016 to 2017, the employment still surpasses much of the past decade's employment numbers. The average annual wage has fluctuated over the last decade between a high of \$18,712 in 2010 to a low of \$17,408 in 2013 to its current level at \$18,274. The general rise in employment can be attributed to a comfortable consumer with more disposable money for luxuries and entertainment.

Wages are significantly lower in Iowa than in the nation as a whole. Iowans in the private sector of this industry made 46.8 percent less than the national average wage of \$37,759. Furthermore, Iowa's private sector wages are much lower than the other states in the region, with the exception of the Dakotas, Nebraska and Kansas.





# ARTS, ENTERTAINMENT & RECREATION IOWA INDUSTRY PROFILE

## What is Arts, Entertainment and Recreation?

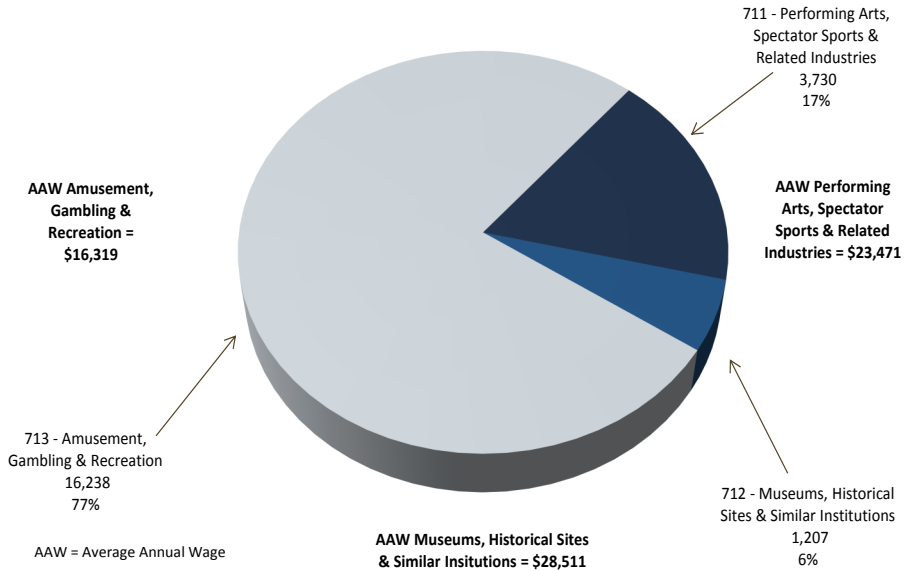
The **Arts, Entertainment and Recreation** sector comprises: (a) establishments that are involved in producing, promoting, or participating in live performances, events, or exhibits intended for public viewing; (b) establishments that preserve and exhibit objects and sites of historical, cultural, or educational interest; and (c) establishments that operate facilities or provide services that enable patrons to participate in recreational activities or pursue amusement, hobby, and leisure time interests.

The main components of this sector are **Performing arts and spectator sports, Museums, historical sites, zoos and parks, and Amusements, gambling, and recreation.**

Source: [www.bls.gov/cew/bls\\_naics/bls\\_naics\\_app.htm](http://www.bls.gov/cew/bls_naics/bls_naics_app.htm)

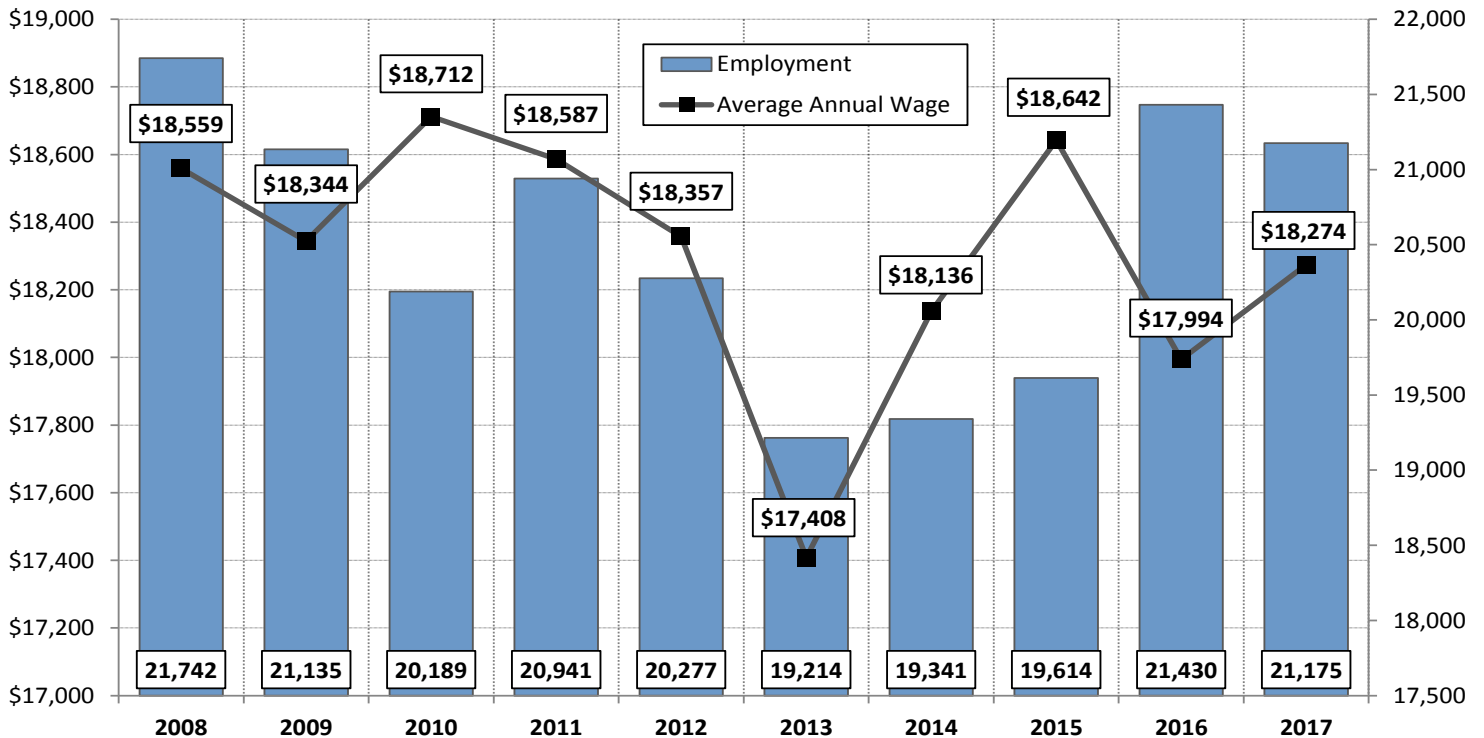
## 2017 Industry Breakout by Employment in Iowa

Finance & Insurance NAICS Industry Coding  
Percentage Employed and Average Annual Wage by Subsector



Source: Quarterly Census of Employment and Wages (QCEW), Iowa Workforce Development

## 2008–2017 Employment in Arts, Entertainment & Recreation in Iowa



Source: Quarterly Census of Employment and Wages (QCEW), Iowa Workforce Development

# ARTS, ENTERTAINMENT & RECREATION IOWA INDUSTRY PROFILE



## Examples of Major Arts, Entertainment & Recreation Employers

Name of Company	Industry
Adventure Lands of America Inc	Amusement parks and arcades
Catfish Bend Casino Corp	Gambling industries
Diamond Jo Casino	Gambling industries
Pzazz Entertainment	Amusement parks and arcades
Wild Rose Resorts	Gambling industries
Blank Park Zoo	Museums, historical sites, zoos, and parks

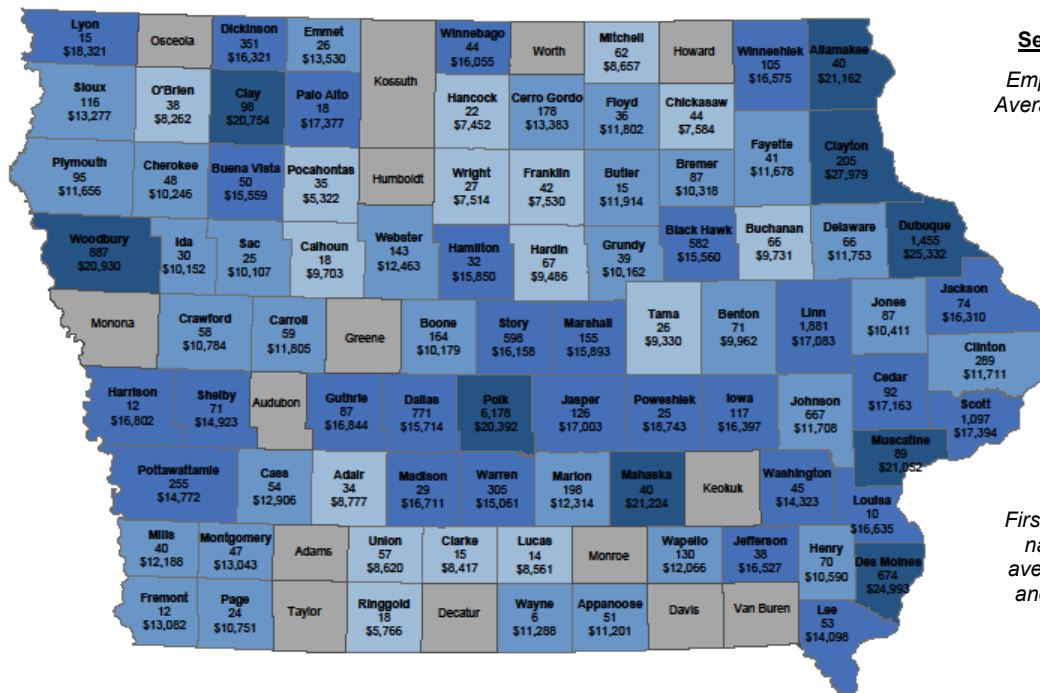
Source: [www.iowaworkforcedevelopment.gov/employer-database](http://www.iowaworkforcedevelopment.gov/employer-database)

## Employers

The **Amusements, gambling, and recreation** subsector was the largest sector in this industry, accounting for 76.7 percent of employment and 67.3 percent of worksites. The second largest subsector in this industry was **Performing arts and spectator sports**, which accounted for 17.6 percent of employment, and 23.5 percent of establishments.

Even though this industry includes gambling establishments, if establishments are casinos with guest accommodation like a hotel, it will be included in the **Accommodation and Food Services** sector.

## 2017 Covered Employment in Arts, Entertainment & Recreation by County



### Sector Statewide:

Employment - 21,175  
Average Annual Wage - \$18,274

**Label Key:**  
First line is the county name followed by average employment and finally, average wage.

**Wages** Less than \$9,731 \$9,732 - \$13,530 \$13,531 - \$18,743 Greater than \$18,744

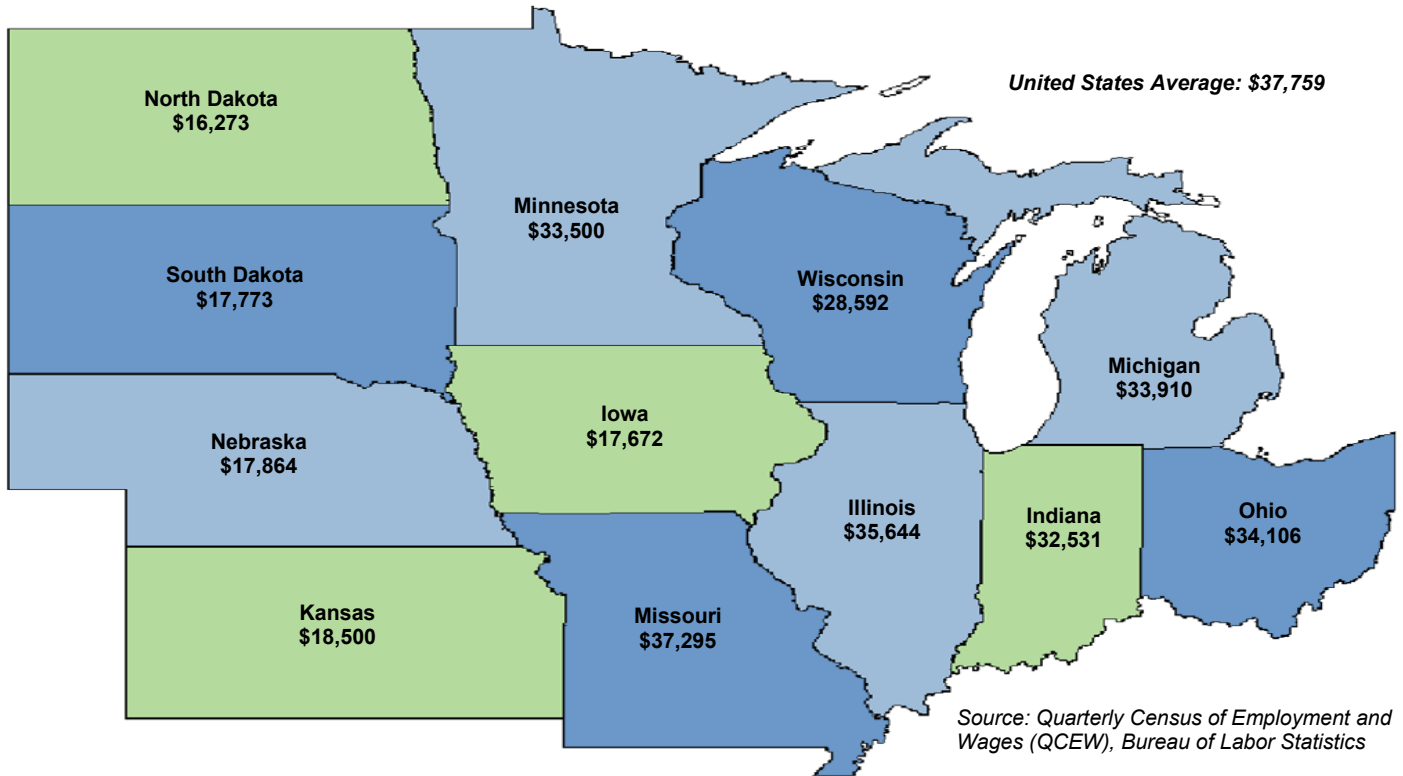
Source: Quarterly Census of Employment and Wages (QCEW), Iowa Workforce Development



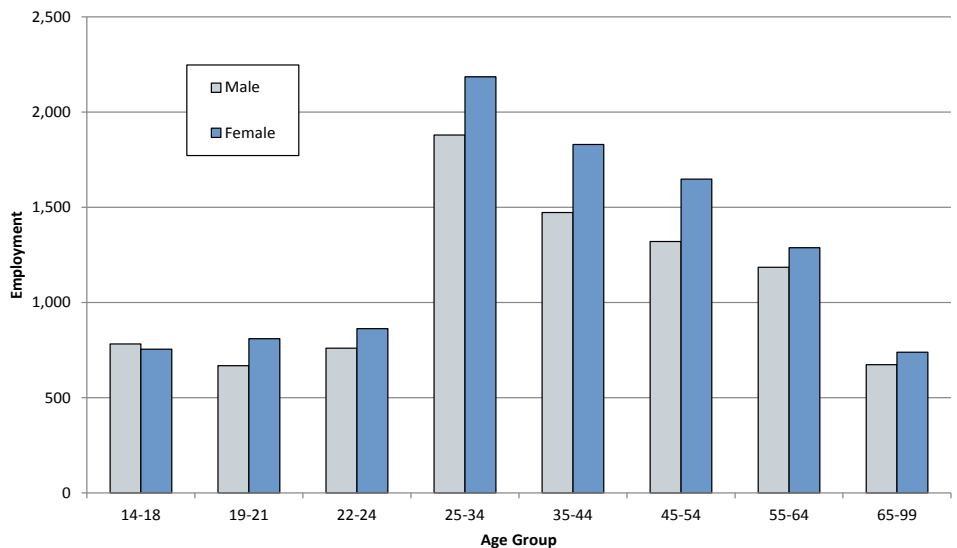
# ARTS, ENTERTAINMENT & RECREATION IOWA INDUSTRY PROFILE

## 2017 Average Annual Wage for Covered Arts, Entertainment & Recreations

State Comparisons by Private Ownership



## Industry Distribution by Age and Gender, 2nd Quarter 2017



Source: Local Employment Dynamics, Iowa Workforce Development and U.S. Census Bureau  
<https://lehd.ces.census.gov/>

### Contact Information

#### Iowa Workforce Development, Employment Statistics Bureau

1000 E Grand Ave  
Des Moines, IA 50319  
800-532-1249  
Fax: 515-281-8195  
lwd.lmi@iwd.iowa.gov  
www.iowaworkforcedevelopment.gov

Equal opportunity employer/program.  
Auxiliary aids and services are available  
upon request to individuals with disabilities.

TTY 515-281-4748  
1-800-831-1399

